

FOUNTAIN NOZZLE 60

IP68 **LANDSCAPE**

Specially purposed for 360° fountain jet installation,
The main frame is composed of marine grade Stainless Steel 316,
Various colors are available,
Safe voltage: 12V DC.



RGB



Extreme Environments



Dimmable



IP68



Easy Installation



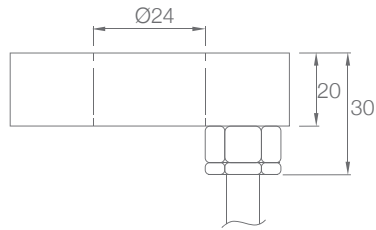
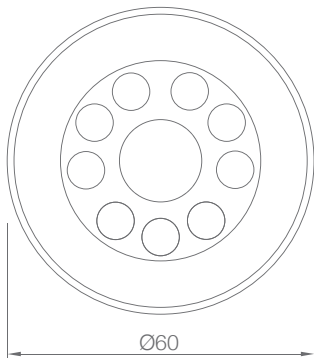
SPECIFICATION

MODEL	▶ FOUNTAIN NOZZLE 60
OPERATING VOLTAGE	▶ 12V DC
POWER CONSUMPTION	▶ 5W Max(Underwater Only)
LED TYPE	▶ High Power LED
COLOR RANGE	▶ 2700K,3000K,4000K,5000K,Tunable White,RGB
CRI	▶ 80min
SYSTEM EFFICIENCY	▶ 50lm/W@3000K
FWHM	▶ 20° (Mono color), 45°, 60°, 100°
MATERIAL	▶ Stainless Steel 316 + Tempered Glass
OPERATING TEMPERATURE	▶ -20°C ~ +55°C
STORAGE TEMPERATURE	▶ -25°C ~ +60°C
LIFE TIME	▶ 50,000 hours/L70 at 25°C
DIMENSIONS	▶ Φ60*31(H)mm
CABLE LENGTH	▶ 3000mm
WATER PROOF	▶ IP68
SUBMERSIBLE DEPTH	▶ 1000mm Max
CONTROL	▶ ON/OFF, DMX (Remote), 0-10V Dim
LIST	▶ CE

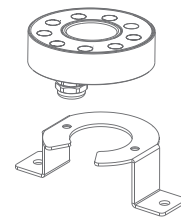
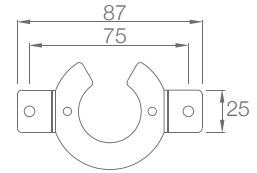
ORDER CODE	MODEL	POWER	CCT	CRI	OPTICS	VOLTAGE	CONTROL	ACC
EXAMPLE	FOUNTAIN NOZZLE 60	- 5	- 3000K	- 80	- 20	- 12	- DMX	

DIMENSIONS

Unit: mm



Bracket



OPTIC SELECTION



20°

LED	Lumens	Watts	Efficacy
WHITE	240.40	5.08	48.08

CenterBeamLux	Illuminance at Distance
4222.21 lx	0.4m
1055.58 lx	0.8m
469.15 lx	1.3m
263.89 lx	1.7m
168.89 lx	2.1m
117.29 lx	2.5m

Ver. Spread: 22.2° Horiz. Spread: 21.9°



100°

LED	Lumens	Watts	Efficacy
WHITE	249.13	4.98	50.03

CenterBeamLux	Illuminance at Distance
578.53 lx	0.4m
144.63 lx	0.8m
64.28 lx	1.3m
36.16 lx	1.7m
23.14 lx	2.1m
16.07 lx	2.5m

Ver. Spread: 109.7° Horiz. Spread: 98.0°

3000K