

INGROUND 150

IP67 **LANDSCAPE**

Sophisticated design makes for easy beam angle adjustments,
Excellent glare control via louver,
The compact structure provides easy installation and maintenance.



RGBW



Easy
Installation



Dimmable



Extreme
Environments



Adjustable



IP67



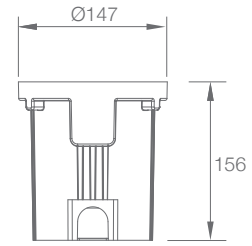
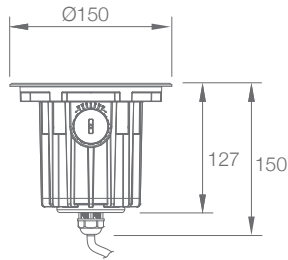
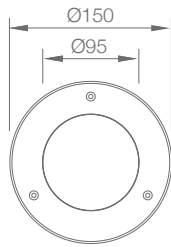
SPECIFICATION

MODEL	▶ INGROUND 150
OPERATING VOLTAGE	▶ 24V DC
POWER CONSUMPTION	▶ 12W Max
LED TYPE	▶ COB,High Power LED
COLOR RANGE	▶ 2700K,3000K,3500K,4000K,5000K,Tunable White,RGB,RGBW
CRI	▶ 90min,80min
SYSTEM EFFICIENCY	▶ 75lm/W@3000K
FWHM	▶ 10°, 15°, 25°, 30°, 45°
MATERIAL	▶ Aluminum + Stainless Steel 316L + Tempered Glass
PROTECTION	▶ IK10
OPERATING TEMPERATURE	▶ -20°C ~ +55°C
STORAGE TEMPERATURE	▶ -25°C ~ +60°C
LIFE TIME	▶ 50,000 hours/L70 at 25°C
DIMENSIONS	▶ Φ150*127(H)mm
CABLE LENGTH	▶ 300mm
WATER PROOF	▶ IP67
CONTROL	▶ ON/OFF, DMX, 0-10V Dim
LIST	▶ CE

ORDER CODE	MODEL	POWER	CCT	CRI	OPTICS	VOLTAGE	CONTROL	ACC					
EXAMPLE	INGROUND 150	-	12	-	3000K - 80	-	15	-	24	-	ON/OFF	-	HC

DIMENSIONS

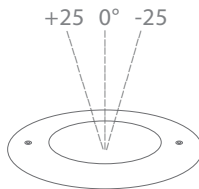
Unit: mm



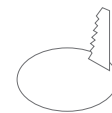
Pre installation Kit(PIKS)



Honey Comb(HC)



Adjustable



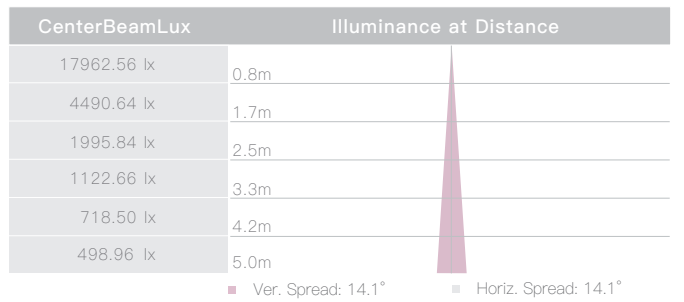
Cut Out 147mm

OPTIC SELECTION



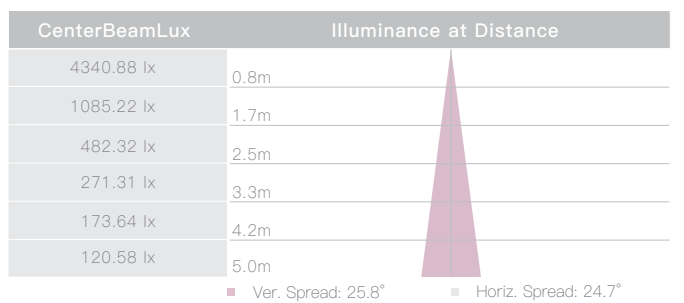
15°

LED	Lumens	Watts	Efficacy
WHITE	890.40	12.00	74.20



25°

LED	Lumens	Watts	Efficacy
WHITE	906.68	12.00	75.56



3000K