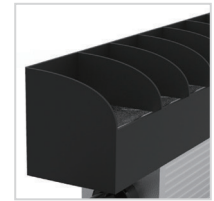


HP-LINEAR DC

IP66 **GRAZE**

A new cost competitive fixture designed for grazing applications, Superb optic design offers smooth mixture of colors and creates a variety of moods,

A fast installation is achieved with quick-plugs, Uniform lighting output by 2 steps or 3 steps bin selection is available upon request.



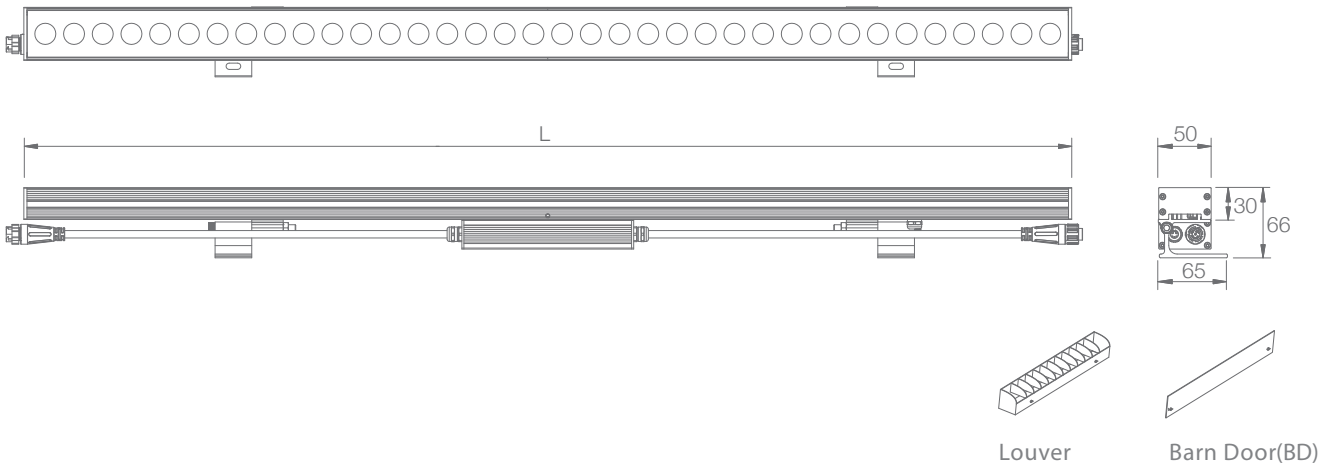
SPECIFICATION

| | |
|-----------------------|--|
| MODEL | ‣ HP-LINEAR DC |
| OPERATING VOLTAGE | ‣ 24V DC, 48V DC |
| POWER CONSUMPTION | ‣ 15W/305mm, 60W/1220mm |
| LED TYPE | ‣ High Power LED |
| COLOR RANGE | ‣ 2700K,3000K,4000K,5000K,6500K,RGB,RGBW |
| CRI | ‣ 90min, 80min |
| SYSTEM EFFICIENCY | ‣ 79lm/W@3000K |
| FWHM | ‣ Tilt 2.5@11°, 6°, 8°*15°, 8°*30°, 8°*50°, 20°*40°, 25°, 45°, 60° |
| MATERIAL | ‣ Aluminum + Tempered Glass |
| OPERATING TEMPERATURE | ‣ -20°C ~ +55°C |
| STORAGE TEMPERATURE | ‣ -25°C ~ +60°C |
| LIFE TIME | ‣ 50,000 hours/L70 at 25°C |
| CONNECTION | ‣ Quick-Plug |
| DIMENSIONS | ‣ 1220(L)*50(W)*66(H)mm, 305/610/915/1000mm available |
| CABLE LENGTH | ‣ 300mm |
| WATER PROOF | ‣ IP66 |
| CONTROL | ‣ ON/OFF, DMX/RDM, 0-10V Dim |
| LIST | ‣ CE |

| ORDER CODE | MODEL | LENGTH | POWER | CCT | CRI | OPTICS | VOLTAGE | CONTROL | ACC |
|------------|--------------|--------|-------|---------|------|--------|---------|---------|----------|
| EXAMPLE | HP-LINEAR DC | - 1220 | - 60 | - 3000K | - 90 | - 6 | - 24 | - DMX | - LOUVER |

DIMENSIONS

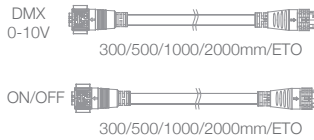
Unit: mm



Leader Cable



Jumper Cable

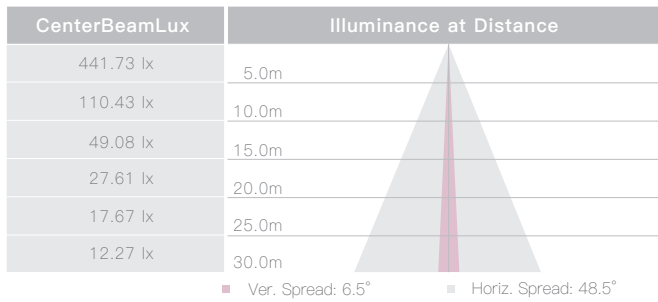


OPTIC SELECTION



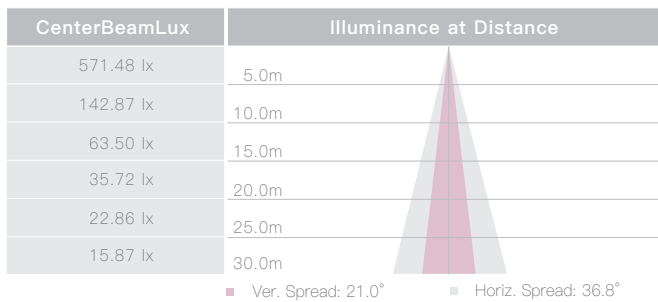
8°X50°

| LED | Lumens | Watts | Efficacy |
|-------|---------|-------|----------|
| WHITE | 4425.00 | 59.00 | 75.00 |



20°X40°

| LED | Lumens | Watts | Efficacy |
|-------|---------|-------|----------|
| WHITE | 4501.10 | 59.00 | 76.30 |



3000K



25°

| LED | Lumens | Watts | Efficacy |
|-------|---------|-------|----------|
| WHITE | 4770.07 | 60.00 | 79.50 |

